

2026



MACHINTECH
INTELLICORE PRIVATE LIMITED

COMPANY PROFILE

MACHINTECH

INTELLICORE PVT LTD

We prioritize innovation and invest in research and development to continuously improve our products. We believe that collaboration and a commitment to excellence are the keys to long-term success.



TABLE OF *CONTENTS*

About Company **01**

Director Message **02**

Vision & Mission **03**

How We Work **04**

Our Service **05**

Our Project **13**

The Company Values **21**

Let's Work Together **22**





MACHINTECH
INTELLICORE PRIVATE LIMITED

ABOUT COMPANY



Machintech Intellicore is a premier IT consulting and software development company based in Greater Noida, Uttar Pradesh. We specialize in architecting comprehensive digital transformations that drive efficiency, enhance security, and guarantee sustainable business growth. Our expert team of software engineers, AI researchers, and cloud architects are dedicated to delivering bespoke solutions that align perfectly with your strategic objectives.

Whether you are a disruptive startup or an established enterprise, our holistic approach to technology ensures you maintain a competitive edge. From custom web application development to complex machine learning implementations, our services are designed to address the most pressing technological challenges faced by modern businesses. We are not just a service provider; we are your dedicated technology partner. Learn About Our Team to discover the passion and expertise driving our success.

At Machintech Intellicore, we fuse deep industry expertise with cutting-edge technological innovation. Our mission is to architect digital transformations that drive efficiency, foster growth, and secure a competitive advantage for B2B organizations worldwide.



MACHINTECH
INTELLICORE PRIVATE LIMITED

DIRECTOR MESSAGE

At Machintech Intellicore, we believe that technology is not just an enabler —it is the foundation upon which future-ready enterprises are built. In today's fast-paced digital era, organizations must continuously evolve to remain competitive. From intelligent automation to scalable cloud infrastructures and advanced AI-driven insights, the opportunities are immense—but so are the challenges. Our mission is to simplify this complexity and empower businesses with solutions that are not only innovative, but also practical, secure, and sustainable.



Ankit Bhakat

Since our inception, we have been committed to delivering tailored digital transformation strategies that align with each client's unique vision. Whether partnering with ambitious startups or established enterprises, we focus on creating long-term value through precision engineering, forward-thinking design, and deep technological expertise.

As we continue to expand our capabilities in automation, machine learning, and next-generation software development, our commitment remains unchanged: to be a trusted technology partner for our clients, guiding them confidently through every stage of their digital journey.

We look forward to shaping the future—together.



MACHINTECH
INTELLICORE PRIVATE LIMITED

VISION & MISSION



Vision

At Machintech Intellicore, our vision is to become a global leader in delivering intelligent, scalable, and future-ready technology solutions that empower businesses to thrive in a digitally connected world. We aim to drive innovation through advanced technologies such as automation, artificial intelligence, and cloud computing, enabling organizations to transform their operations, enhance efficiency, and achieve sustainable growth.

Mission

Our mission is to provide high-quality, customized IT solutions that address real-world business challenges with precision and innovation. We are dedicated to helping our clients accelerate their digital transformation journey by delivering reliable, secure, and scalable systems tailored to their unique needs.



MACHINTECH
INTELLICORE PRIVATE LIMITED

HOW WE WORK

At Machintech Intellicore, our approach is structured, collaborative, and outcome-driven. We don't just build technology—we build solutions that align with your business goals and evolve with your growth.

1. Discovery & Strategic Consultation

Every successful project begins with deep understanding. We engage with your team to analyze your business model, challenges, and objectives. This phase helps us identify opportunities where technology, automation, and AI can create the most impact.

2. Solution Architecture & Planning

Our experts design a tailored roadmap that outlines the technical architecture, timelines, and resources required. Whether it's a scalable cloud platform or an intelligent automation system, we ensure the foundation is robust and future-ready.

3. Agile Development & Integration

We follow agile methodologies to build and integrate solutions in iterative cycles. This ensures flexibility, faster delivery, and continuous feedback—keeping you involved at every stage of development.

4. Testing, Security & Optimization

Quality and security are at the core of everything we deliver. Our rigorous testing processes ensure performance, reliability, and protection against vulnerabilities, while continuous optimization enhances efficiency.

5. Deployment & Support

Once deployed, we don't step away. We provide ongoing support, monitoring, and enhancements to ensure your systems remain efficient, secure, and aligned with your evolving business needs.

6. Continuous Innovation

Technology never stands still—and neither do we. We proactively recommend improvements, automation opportunities, and AI-driven enhancements to keep you ahead of the curve.



MACHINTECH
INTELLICORE PRIVATE LIMITED

Our Services



At Machintech Intellicore, we deliver intelligent, scalable, and future-ready solutions across web development, IT services, and automation. Our offerings are designed to help businesses streamline operations, enhance performance, and unlock new growth opportunities.

From corporate websites to complex web platforms, our team ensures every solution is scalable, secure, and tailored to your business needs. We focus on modern frameworks, responsive design, and high-performance architecture to deliver impactful digital experiences.

We provide strategic IT consulting, cloud solutions, system integration, and cybersecurity services. Our goal is to align your technology ecosystem with your business objectives while ensuring efficiency, security, and long-term sustainability.



MACHINTECH
INTELLICORE PRIVATE LIMITED

Web & Digital Solutions

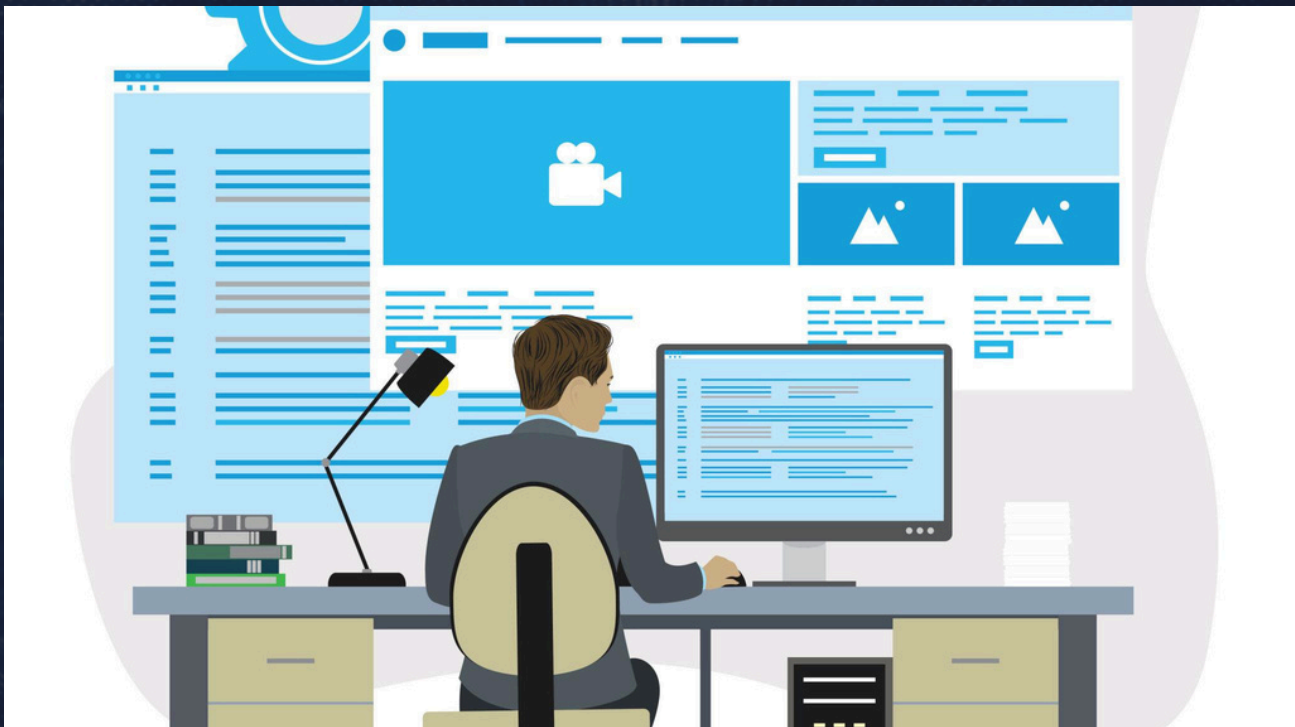


At Machintech Intellicore, we provide comprehensive web and digital solutions that help businesses build a strong online presence, enhance customer engagement, and streamline operations through modern technology. Our approach focuses on performance, scalability, and user experience to ensure long-term digital success.



MACHINTECH
INTELLICORE PRIVATE LIMITED

1. Business Website Design & Development



We design and develop professional business websites that reflect your brand identity and communicate your value effectively. Our websites are fully responsive, SEO-friendly, and optimized for speed and performance. From corporate websites to dynamic service platforms, we ensure seamless navigation, engaging UI/UX, and strong backend functionality to support your business growth.



MACHINTECH
INTELLICORE PRIVATE LIMITED

2. E-Commerce Website & Payment Integration

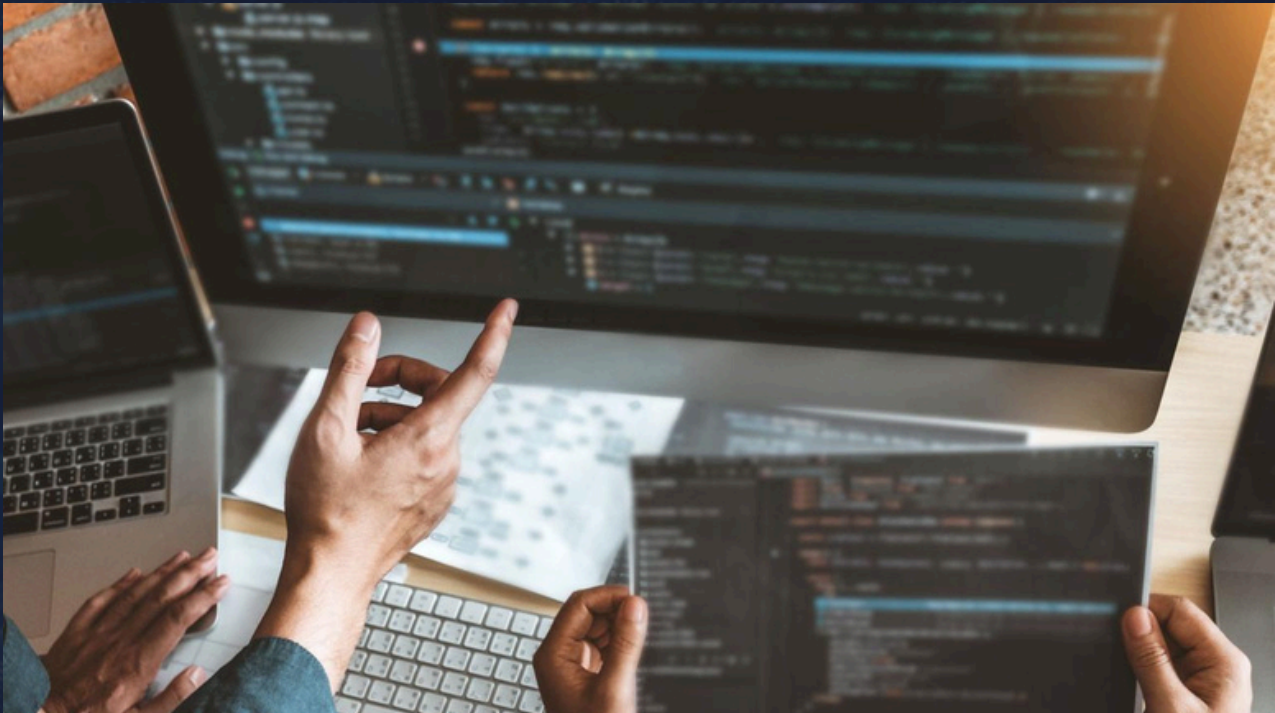


We build scalable and secure e-commerce platforms that enable businesses to sell products and services online efficiently. Our solutions include product management systems, inventory tracking, order processing, and integration with multiple payment gateways (UPI, cards, wallets). We focus on creating smooth checkout experiences and secure transactions to maximize conversions and customer trust.



MACHINTECH
INTELLICORE PRIVATE LIMITED

3. WordPress & Custom Web Development

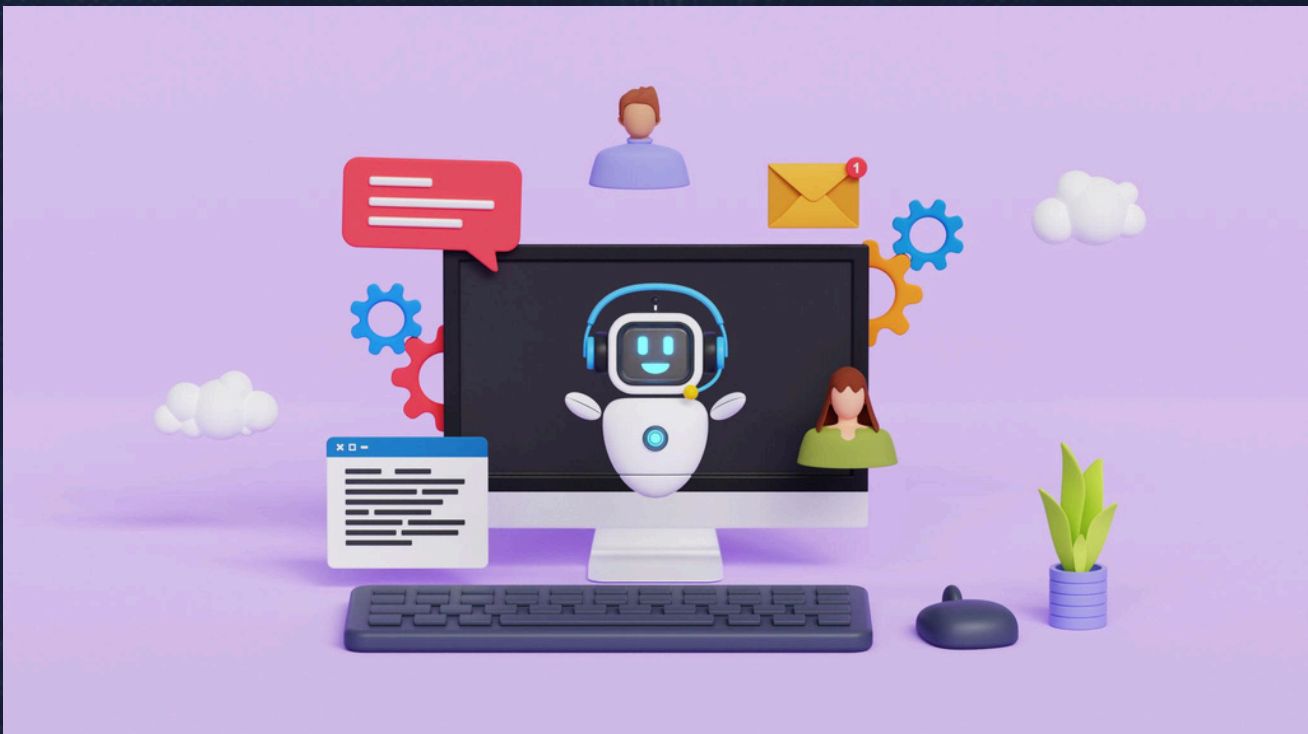


We offer both WordPress-based and fully custom web development services depending on your business needs. WordPress solutions provide flexibility and easy content management, while our custom-built applications deliver advanced functionality, high performance, and complete scalability. Every solution is built with clean architecture, security best practices, and future expansion in mind.



MACHINTECH
INTELLICORE PRIVATE LIMITED

4. AI Agents & Chatbots

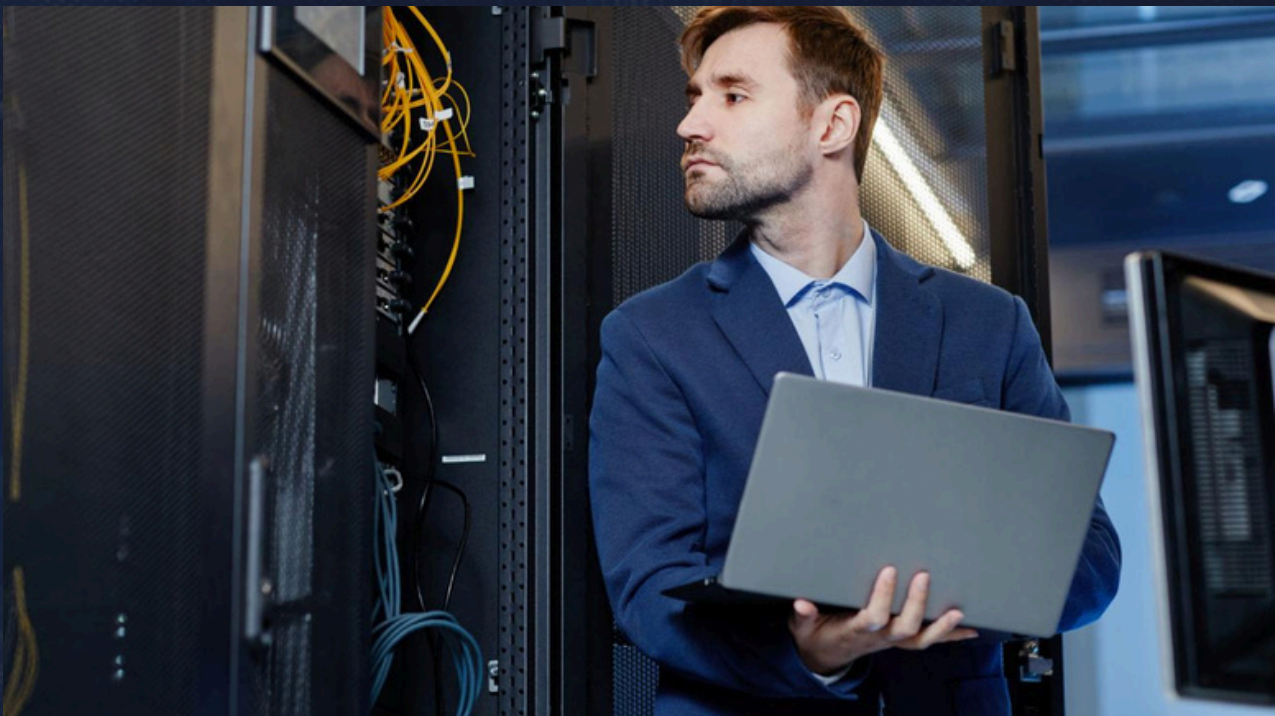


Our AI-powered agents and chatbots automate customer interactions and business processes. These intelligent systems can handle customer queries, lead generation, appointment booking, and support services 24/7. By integrating AI into your workflow, we help improve response time, reduce operational costs, and enhance overall customer experience.



MACHINTECH
INTELLICORE PRIVATE LIMITED

5. IT Infrastructure Setup & Management

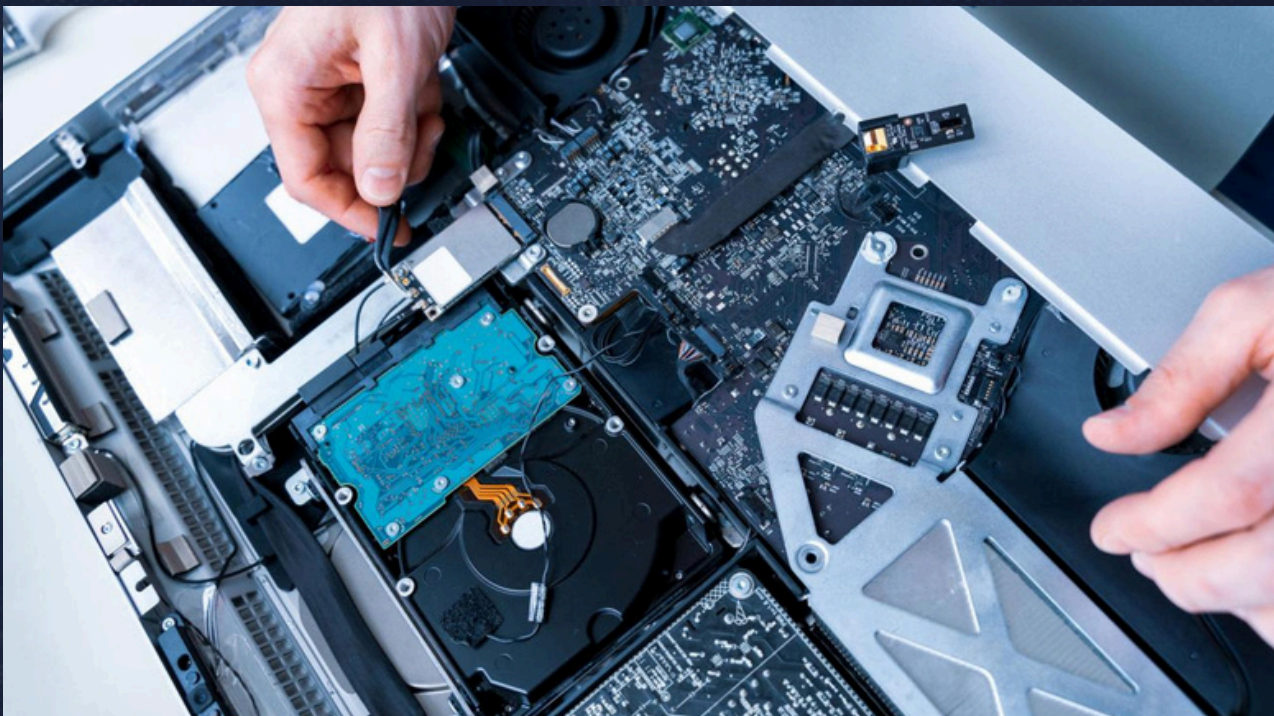


We design, implement, and manage robust IT infrastructures tailored to your business requirements. Our services include network setup, cloud deployment, server configuration, and ongoing maintenance. We ensure high availability, data security, and optimized performance so your systems remain reliable and scalable as your business grows.



MACHINTECH
INTELLICORE PRIVATE LIMITED

6. Computer, Server & Hardware Solutions



We provide end-to-end hardware solutions including installation, configuration, maintenance, and troubleshooting of computers, servers, and networking equipment. Our team ensures that your hardware infrastructure is efficient, secure, and aligned with your operational needs, minimizing downtime and maximizing productivity.



MACHINTECH
INTELLICORE PRIVATE LIMITED

Our Project



At Machintech Intellicore, we have successfully designed and developed a highly advanced, full-stack logistics and automation platform titled KU Express—a next-generation SaaS-based logistics orchestration system built to transform how businesses and individuals manage deliveries, operations, and supply chains.

This platform integrates the capabilities of leading logistics ecosystems into a unified, intelligent solution that supports B2B enterprises, B2C consumers, and internal operations teams. Built using modern technologies such as Next.js, Node.js, MongoDB, Redis, and microservices architecture, KU Express is engineered for scalability, high performance, and real-time automation.

Project Overview

KU Express acts as a centralized logistics automation hub that enables seamless shipment booking, intelligent carrier selection, real-time tracking, and end-to-end delivery management. The platform is designed to handle large-scale operations with support for multiple logistics partners, hyperlocal deliveries, and advanced analytics.

⚙️ Key System Architecture

The system is built on a robust and scalable architecture featuring:

- **Modern Frontend:** Responsive dashboards using Next.js and Tailwind CSS
- **Powerful Backend:** Node.js with Express for API-driven operations
- **Database & Caching:** MongoDB for flexible data handling and Redis for high-speed caching
- **Secure Authentication:** JWT and OAuth2-based authentication systems
- **Deployment Ready:** Docker-based microservices optimized for Linux VPS environments



MACHINTECH

INTELLICORE PRIVATE LIMITED

Multi-Dashboard Ecosystem

1. Super Admin Panel

A complete control tower for platform management with features like shipment analytics, vendor management, pricing engine, pincode intelligence, SLA monitoring, and franchise operations.

2. Executive Panel

Designed for internal teams to manage daily operations including shipment handling, NDR resolution, customer support, and real-time delivery tracking.

3. B2B Customer Portal

A powerful interface for businesses and eCommerce sellers to manage bulk shipments, track deliveries, handle billing, and access logistics insights.

4. B2C Consumer Application

A user-friendly mobile/web interface enabling individuals to book shipments, track packages, make payments, and receive real-time notifications

Intelligent Automation Engine

One of the core innovations of this project is the Logistics Orchestration Engine, which automates critical decision-making processes:

- **Carrier Selection Engine:** Automatically selects the best delivery partner based on cost, SLA, serviceability, and priority rules
- **Dynamic Routing Logic:** Ensures optimal delivery pathways for speed and efficiency
- **Automated Pricing Engine:** Calculates rates based on zones, weight, and vendor pricing
- **Exception Handling & SLA Alerts:** Real-time monitoring and automated alerts for delays or failures

Data & Analytics

The platform includes advanced analytics and reporting tools that provide insights into:

- Shipment volumes and trends
- Vendor performance
- Revenue and cost optimization
- Delivery success rates and SLA compliance

API & Integration Ecosystem

KU Express also functions as an API-first platform, allowing external businesses to integrate logistics capabilities directly into their systems through APIs for shipment creation, tracking, pricing, and serviceability.



MACHINTECH
INTELLICORE PRIVATE LIMITED

Project 2



At Machintech Intellicore, we have designed and developed BK Assets Management, a comprehensive full-stack web application built to streamline real estate operations, automate booking workflows, and provide complete visibility across multiple stakeholders including Super Admins, Branches, Agents, and Customers.

This platform is engineered to handle real-world real estate scenarios with scalability, security, and intelligent automation at its core.

Project Overview

BK Assets Management is a multi-role, SaaS-based property management system that enables seamless handling of plots, shops, and farmhouses. It supports real-time booking, partial ownership allocation, commission tracking, and automated notifications—making it ideal for modern real estate businesses.

The system ensures zero double-booking, transparent commission workflows, and synchronized data across all panels.



MACHINTECH

INTELLICORE PRIVATE LIMITED

User Roles & Panels

Super Admin Panel (Control Center)

The Super Admin acts as the central authority with full control over the platform.

Key Features:

- Dashboard with:
 - Total properties (plots, shops, farmhouses)
 - Sold vs vacant analytics
 - Revenue and commission insights
- Branch Management:
 - Create and manage branches
 - View branch-specific dashboards (sales, agents, commissions)
- Commission Approval System:
 - Approve/reject commissions set by branches
- Agent Hierarchy Management:
 - View referral tree structure of agents
- Booking Management:
 - View all bookings
 - Assign nearest branch
 - Access full customer details
- Property Management:
 - Set pricing
 - Update status (Vacant / Booked / Hold)
- Notification System:
 - Automated reminders for pending payments

Branch Panel

Each branch operates independently but stays connected to the central system.

Features:

- Secure signup/login
- Branch dashboard (limited to branch data)
- Agent Management:
 - View agents under branch
 - Referral hierarchy visualization
- Commission Setup:
 - Define agent commissions (requires approval)
- Property Management:
 - Assign properties to agents
 - View customer bookings



MACHINTECH

INTELLICORE PRIVATE LIMITED

- **Booking Sync:**
 - Real-time sync with all branches
 - Prevents duplicate bookings

Agent Panel

Agents manage customers and earn commissions through direct and referral-based sales.

Features:

- **Dashboard:**
 - Assigned customers
 - Sales performance
 - Earnings overview
- **Referral System:**
 - Unique referral link
 - Tree-based agent hierarchy
- **Document Verification:**
 - Mandatory Aadhaar & PAN upload
- **Customer Handling:**
 - View assigned customers and booking details

Customer Panel

Designed for end users to explore and book properties easily.

Features:

- **Signup/Login system**
- **Property Listings:**
 - Plots (1–1112)
 - Shops (1–151)
 - Farmhouses (1–68)
- **Booking System:**
 - Partial booking support (e.g., 50/100 yards)
- **Payment System:**
 - Track payments
 - Billing schedule
 - Payment history



MACHINTECH
INTELLICORE PRIVATE LIMITED

Smart Hold & Auto-Release System

- When a customer initiates a booking but does not complete payment, the property:
- Goes into HOLD (Yellow) state
- Becomes unavailable for others
- If payment is not completed within 2 days:
- Automatically reverts to Vacant (Red)
- Becomes available again
- This prevents blocking inventory unnecessarily while ensuring fair access.

Business Impact

This system delivers:

- Complete automation of real estate operations
- Transparent commission tracking
- Improved sales efficiency
- Real-time data synchronization
- Enhanced customer experience
- Scalable architecture for future expansion

Conclusion

The BK Assets Management System is a powerful example of how Machintech Intellicore transforms traditional real estate processes into a digitally driven, intelligent ecosystem.

It is fully production-ready, scalable, and designed for real-world deployment—enabling businesses to manage assets, bookings, and stakeholders with unmatched efficiency and control.



MACHINTECH
INTELLICORE PRIVATE LIMITED

Automation Services



At Machintech Intellicore, our smart automation products—such as motion-sensing and presence-detection bulbs—are designed to bring intelligence, efficiency, and convenience into everyday environments. These advanced lighting solutions automatically respond to human movement and occupancy, ensuring that lights turn on when needed and switch off when spaces are unoccupied, significantly reducing energy consumption and operational costs. Equipped with high-precision sensors and adaptive learning capabilities, our bulbs can distinguish between motion and continuous presence, making them ideal for homes, offices, warehouses, and smart buildings.

Beyond basic automation, our solutions integrate seamlessly with broader IoT ecosystems, allowing centralized control, scheduling, and real-time monitoring through smart platforms. This not only enhances user comfort and safety but also supports sustainable energy practices by minimizing unnecessary power usage. With a focus on durability, security, and intelligent design, our automation lighting products represent a perfect blend of innovation and practicality—helping businesses and individuals transition toward smarter, more responsive environments.



Our Automation Clients



KIRAN PUBLIC SCHOOL



Pratyush Aqua Paradise



MACHINTECH
INTELLICORE PRIVATE LIMITED

THE COMPANY VALUES

At Machintech Intellicore, our values are deeply embedded in everything we do, guiding our decisions, shaping our culture, and defining the way we deliver technology solutions. We believe in innovation with purpose, where every advancement in automation, artificial intelligence, and cloud computing is applied thoughtfully to solve real-world business challenges and create measurable impact. Our client-centric approach ensures that we listen, understand, and collaborate closely with our partners, allowing us to craft solutions that are not only technically sound but also strategically aligned with their long-term goals. Integrity and trust remain at the core of our relationships, as we uphold transparency, accountability, and the highest standards of data security in every engagement. We are committed to excellence in execution, consistently delivering scalable, reliable, and high-performance solutions through disciplined processes and expert craftsmanship. At the same time, we foster a culture of continuous learning and growth, empowering our team to stay ahead of technological advancements and bring innovative ideas to life. We also recognize our responsibility toward sustainability, designing systems that are efficient, future-ready, and contribute to long-term business and societal progress. Above all, we believe in the power of collaboration—bringing together diverse expertise, creativity, and passion to build intelligent solutions that drive success for our clients and shape a smarter digital future.



MACHINTECH
INTELLICORE PRIVATE LIMITED


LET'S WORK TOGETHER



At Machintech Intellicore, we believe that great innovation begins with strong collaboration. Whether you are looking to build a powerful web application, modernize your IT infrastructure, or implement intelligent automation solutions, our team is ready to partner with you at every step of your journey. We take the time to understand your business, your challenges, and your vision—so we can design solutions that are not only technologically advanced but also strategically aligned with your goals.

From initial consultation to deployment and beyond, we work closely with you to ensure transparency, agility, and measurable outcomes. Our focus is on creating long-term partnerships, not just delivering projects. With a commitment to excellence, innovation, and reliability, we help you turn ideas into impactful digital solutions that drive growth and efficiency.

Let's build something meaningful together—reach out to us today and take the first step toward transforming your business with technology.

 **+9188103 11464 || +91 88821 07674**

 **Support@machintech.tech**



www.machintech.digital
www.machintech.tech